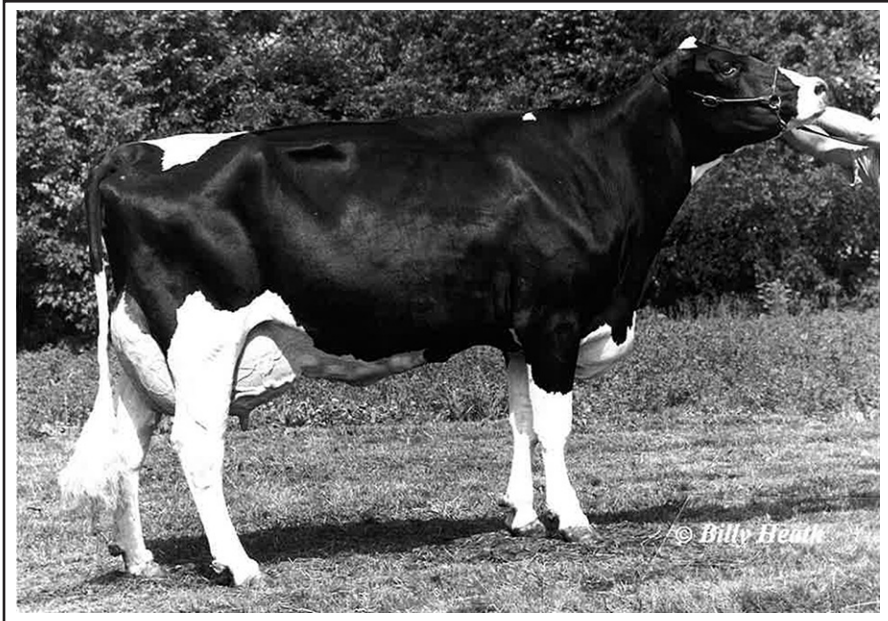




Ohio Holstein 2018 Convention Sale ~ March 9, 2018



5th Dam: LANGACRES BEAUTIFUL HOLLY-ET EX-94 3E DOM

#79 SPRINGHILL-OH UTAH HYBRID

SPRINGHILL
CHRISTOPHER T LANG
7109 STATE ROUTE 514
BIG PRAIRIE, OH 44611
330/473-9660

SPRINGHILL-OH UTAH HYBRID P9 PTPI 43%R
840003132783182 99%RHA-I +2270

05/17/2016
PTA +684M# +21F# +22P# 44%R 12/2017
PTA +5.8PL# 2.83SCS# +3.5DPR# 4.5%DCE#
PTA +1.70T#+1.76UDC# +.93FLC# 43%R 12/2017
PTA +54FE# +3.5FI# 6.4%SCE#

JR 2 yr old by UTAH
from the HOPE Family
Due 4/13/18 to 7HO12600
BACON-HILL PETY MODESTY-ET

P9 50K GTPI 98%R +2335 G
VAL-BISSON DOORMAN-ET
CAN 107281711 99%RHA-I TR TP TY TV TL
CAN EX 90 08/06/2011

50K GTPI 92%R +2476 G
PINE-TREE 2149ROBST 4846-ET
USA 69804610 100%RHA-NA
6-07 86 EEV+V DOM 03/16/2011

50K GTPI 99%R +2326 G
LADYS-MANOR PL SHAMROCK-ET
USA 68977120 100%RHA-NA TR TP TY TV TL
7-09 90 EEV GM 12/14 09/11/2009

3K GTPI 81%R +1903 G
SPRINGHILL-OH MAN-O-MAN HIT
USA 69258363 100%RHA-NA TV TD
3-00 85 VV+V+ 04/10/2010

*** 2-00 2 305 26160 100 3.7 973 3.2 846 95
365 31040 100 3.7 1157 3.3 1017 95

P9 77K GTPI 90%R +2429 G
VIEW-HOME UTAH-ET
USA 72860352 99%RHA-I TR TP TY TV TL TD
05/29/2013

9K GTPI 80%R +2101 G
SPRINGHILL-OH ROCK HOLLY-ET
USA 71442675 100%RHA-NA
3-03 85 ++++V 05/14/2012

*** 2-00 2 305 19100 100 3.9 737 3.1 600 95
354 21660 100 3.9 850 3.2 686 95
*** 3-01 2 287 19110 93 3.9 745 3.2 617 93
*** 4-00 2 305 18950 93 4.5 854 3.2 610 93
335 19520 93 4.5 882 3.2 630 93

3rd Dam: SPRINGHILL-OH DURHAM HOPE VG-85
10-03 2 365 31780 3.7% 1183 3.1% 971
LIFE: 2914 232170 3.4% 7967 3.0% 7047

4th Dam: SPRINGHILL-OH OUT HANNAH EX-90 2E
4-00 2 365 32870 3.6% 1195 2.8% 910
LIFE: 1670 145230 3.5% 5041 2.8% 4070

5th Dam: LANGACRES BEAUTIFUL HOLLY-ET EX-94 3E DOM
8-09 2 365 28350 4.8% 1366 3.1% 892
LIFE: 2302 160680 4.1% 6518 3.1% 5048

• 2nd Aged Cow Mid-East Sprg/Nat 1996

6th Dam: LANGACRES MARS HOLLY EX-90 GMD DOM
3-06 2 365 31310 3.9% 1230 2.8% 891

7th Dam: LANGACRES GLENDELL HEATHER EX-91 3E GMD DOM
LIFE: 2508 181310 3.9% 7039 2.9% 4518

8th Dam: LANGACRES ELEVATION HOPE EX-91 2E GMD DOM
LIFE: 3562 205060 4.4% 9093

9th Dam: DOJIMAR REFLECTION HOPE VG-88 DOM